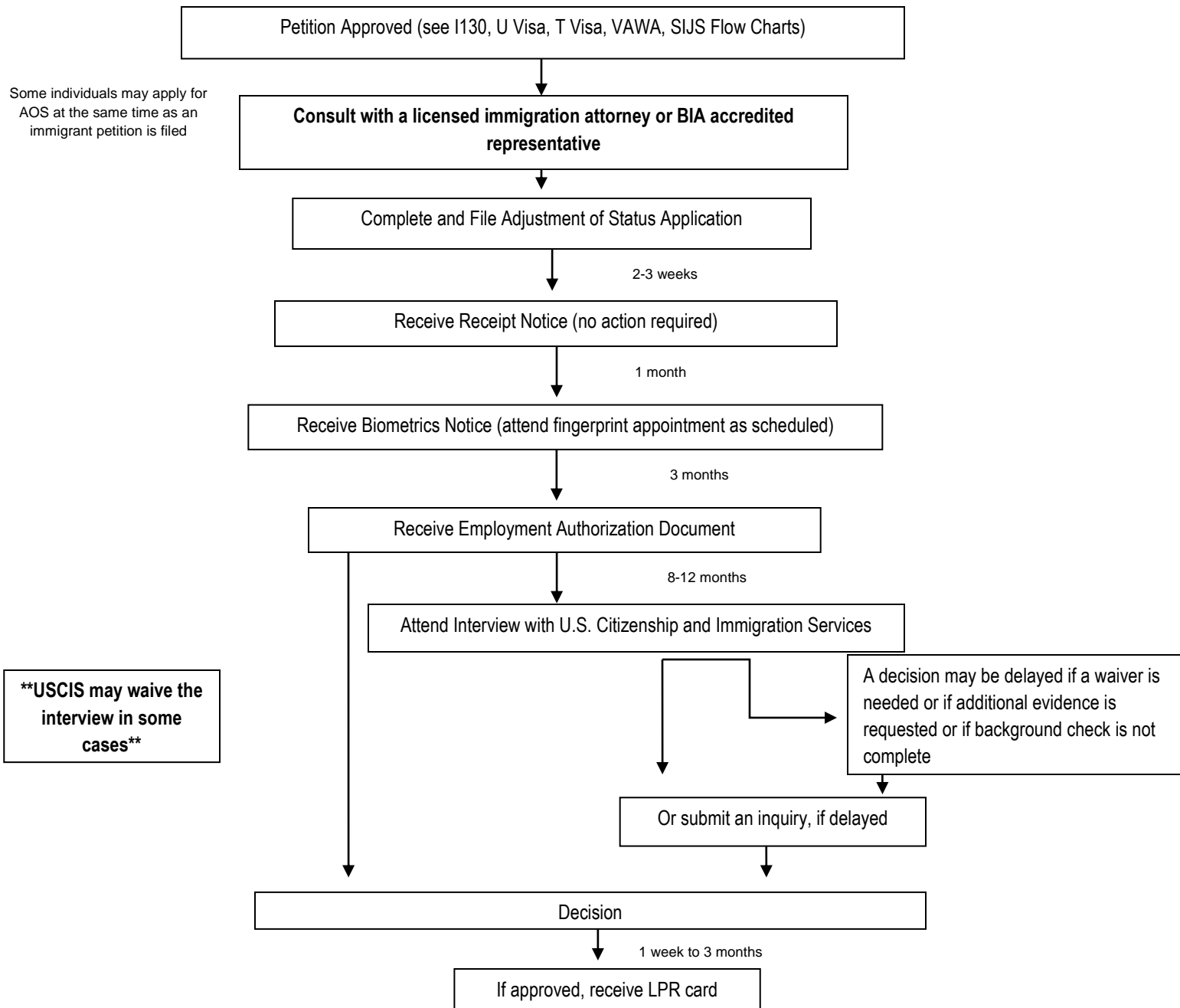


Adjustment of Status (AOS) before USCIS Flow Chart (I485)

Adjustment of status is the process through which a person with an approved immigrant petition applies for lawful permanent resident (LPR) status in the United States. Please consult with a licensed immigration attorney or BIA-accredited representative to determine whether you are eligible to apply for LPR status.



This flow chart is not intended as legal advice. These estimated times are subject to change at any time. Please visit www.USCIS.gov for current processing times.